



Acute Laser Pty Ltd is a metal processing company that uses state-of-the-art technologies to cut, fold and deburr metal components. Started in 1999 as an all-Australian-owned family business, Acute laser serves customers in South East Queensland and northern New South Wales.

Laser Cutting

SHEET & PLATE

3 TRUMPF Laser cutting machines

CAPACITY

- Maximum sheet size: 3000X1500
- Mild steel up to 25mm thick
- Stainless Steel up to 25mm thick
- Aluminium up to 25mm thick
- Brass and copper up to 10mm thick

TUBE CUTTING

TRUMPF 5 axis cutting machine

CAPACITY

- RHS up to 150x75
- SHS from 13x13 to 120x120
- CHS from 13 to 170 diameter
- Angle and PFC up to 120mm
- Mild steel up to 8mm thick
- Aluminium and Stainless Steel up to 6mm thick
- Maximum finished cut length 3000mm
- 5 axis bevel cutting
- Antisplatter system to splatter reduction on internal surface

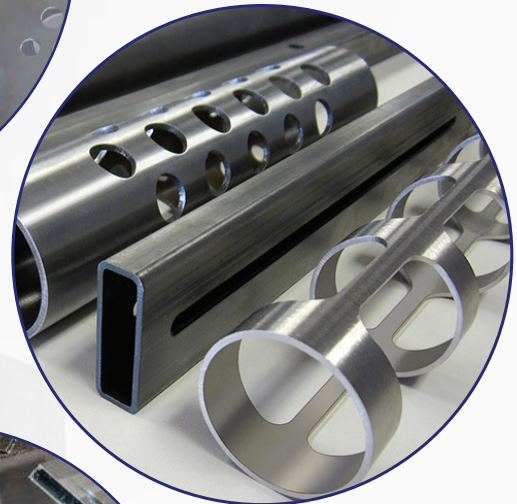
Metal Folding

4 LVD press brakes up to 230 tonne

See reverse for bending details and capacity

Other services

- Part finishing and deburring
- Drilling, Tapping and Countersinking
- Delivery available



Contact Details

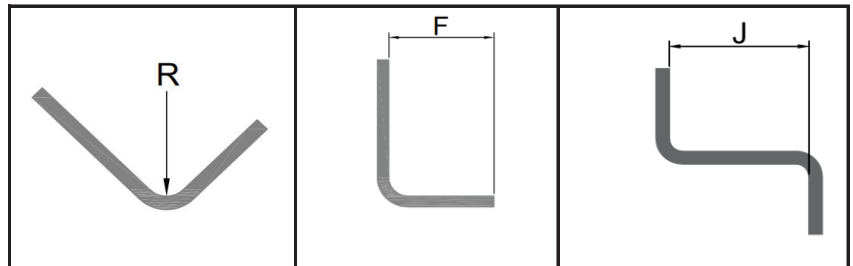
Acute Laser

112 Mica Street, Carole Park, Qld, 4300

 07 3719 0300

 quotes@acutelaser.com.au

 www.acutelaser.com.au



BENDING GUIDE

THICKNESS	MATERIAL	BEND RADIUS "R" (INSIDE)	MINIMUM FLANGE @ 90° "F"	MINIMUM JOGGLE SIZE "J"
0.6mm (Use for 0.55mm to 0.70mm)	Mild Steel 250g only	1.4	6.9	11.4
	Stainless Steel 304/316	1.2	6.9	11.2
	Aluminium 5005	1.7	6.9	11.7
1.0mm (Use for 0.9mm)	Mild Steel 250g only	1.6	6.9	11.6
	Stainless Steel 304/316	2.0	5.5	8.0
	Aluminium 5005	1.7	6.9	11.7
1.2mm	Mild Steel 250g only	1.4	5.5	7.4
	Stainless Steel 304/316	1.5	5.5	7.5
	Aluminium 5005	1.5	5.5	7.5
1.6mm	Mild Steel 250g only	1.7	6.9	11.7
	Stainless Steel 304/316	2.0	6.9	7.5
	Aluminium 5005	1.0	6.9	11.0
2.0mm	Mild Steel 250g only	1.9	7.7	9.9
	Stainless Steel 304/316	2.2	7.7	10.2
	Aluminium 5005	2.9	7.7	10.9
2.5mm	Mild Steel 250g only	2.6	10.1	17.6
	Stainless Steel 304/316	3.5	10.5	18.5
	Aluminium 5005	2.0	10.5	17.0
3.0mm	Mild Steel 250/350g	3.3	12.9	20.8
	Stainless Steel 304/316	3.6	12.4	18.6
	Aluminium 5005	3.7	12.4	18.7
4.0mm	Mild Steel 250/350g	3.4	14.9	20.9
	Stainless Steel 304/316	4.8	15.0	22.3
	Aluminium 5005	3.1	14.9	20.6
5.0mm	Mild Steel 250/350g	4.1	19.8	26.6
	Stainless Steel 304/316	5.7	19.8	28.2
	Aluminium 5005	6.5	19.8	29.0
6.0mm	Mild Steel 250/350g	6.1	24.8	33.6
	Stainless Steel 304/316	7.2	24.8	34.7
	Aluminium 5005	7.8	24.8	35.3
8.0mm	Mild Steel 250/350g	7.7	34.8	45.2
	Stainless Steel 304/316	10.4	34.8	47.9
10.0mm	Mild Steel 250/350g	11.0	52.5	66.0
	Stainless Steel 304/316	14.0	52.5	69.0
12.0mm	Mild Steel 250/350g	12.0	52.5	67.0
	Stainless Steel 304/316	15.5	52.5	70.5

* All dimensions are in millimeters (mm)

** Cannot press 5083 Aluminium, Bisalloy Materials or Wear Plate

*** Holes close to bend line need to have a minimum distance from the edge of the hole to the inside flange same distance as the minimum flange (F) value

Longest length available 3000mm